



Solutions for the Intraocular and Contact Lens Industry



A Clear Vision for the Future of
IOL and Contact Lens Manufacturing

www.aerotech.com

Dedicated to the Science of Motion

Aerotech Worldwide
United States • Germany • United Kingdom • Japan • China • Taiwan • France



Your Process, O

LensPro-HP Series

Increasing Part Quality
and System Accuracy



- Air-bearing slides
- Spherical, aspherical, toric, and diffractive profiles
- Air isolation
- Based on ABL1500 series stages

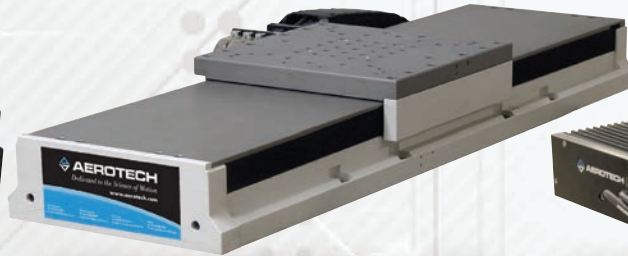
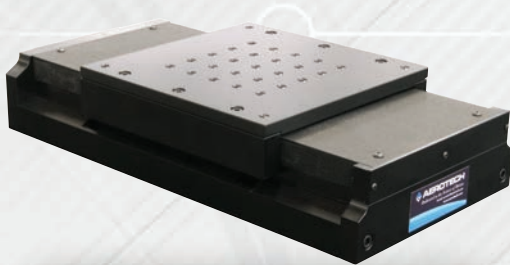
Part quality comparable to competitive hydrostatic bearings

- 1 Networked open-control platform allows for easy expansion
- 2 Standard commercial PC technology running latest Windows® software
- 3 Lens profile manager software creates programs in easily editable G-code programs
- 4 Three standard and up to seven tool posts with micro-height adjustment; optional LVDT front surface probe, additional tool posts, TLG-4000 fast tool servo, and marking/milling spindles
- 5 Toric milling/drilling spindle, LVDT, and fixed tool posts support a wide range of lens geometries
- 6 Closed-loop air-bearing spindle with unique bearing configuration greatly improves surface finish
- 7 Granite mounting surface with passive or air isolation provides a stable platform for lathing process

Configuration Flexibility
at Price Points that are
Unmatched in the Industry

Our Components

Component Solutions



Good

ALS2200

- Smooth, reliable crossed-roller bearings capable of making lenses with minimal polishing times
- Compact size reduces machine footprint in space-constrained cleanroom environments
- The ideal stage solution for high volume, low-cost lens turning platforms

Better

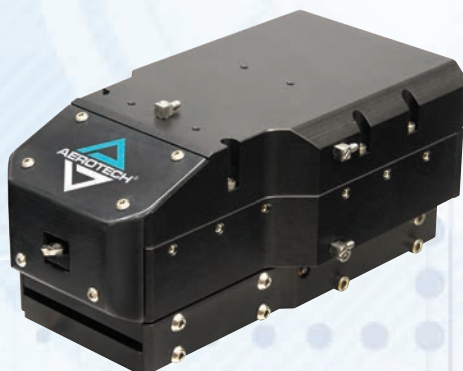
ALS5000CR

- High-precision crossed-roller bearing stage capable of producing polish-free surfaces
- Large tabletop easily accommodates multiple tools and measurement devices
- Larger stage cross-section provides adequate stiffness for toric lens profiling

Best

ABL1500

- Air-bearing stage completely eliminates mechanical noise sources for the best possible lens quality
- Friction-free bearing allows for small step sizes making it the ideal platform for diffractive lens manufacturing
- The high-accuracy linear encoder operating at picometer resolution minimizes profile errors when turning complex lens profiles



Toric Lens Generator

- Oscillating tool post designed specifically for toric lens profile
- 4 mm of total travel has adequate travel for the most complex profiles
- Compact drive technology can be mounted inside the lathe machine base
- Non-proprietary, open programming language allows for complete customization of the lens surface profile
- Significant cost and space savings over competitive solutions



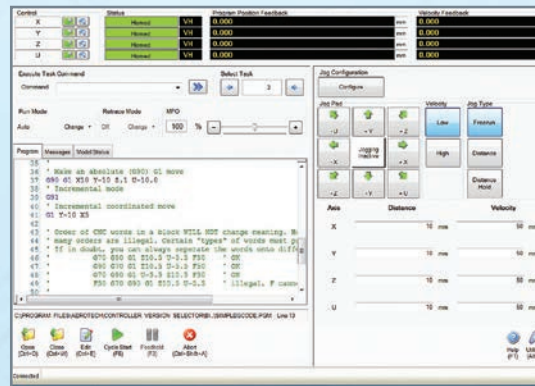
Aerotech Automated Solutions

Integrated Motion, PLC, Fieldbus, Data Acquisition



Digital Automation Platform

- PC-based
- 1 to 32 axes of coordinated motion
- Up to 32 tasks
- RS-274 (G-code)
- Advanced features for demanding applications
- PWM or linear drives (up to 150 A)
- Scanner control for marking
- Tightly integrated laser functionality
- Retrofit package for old controls
- Integrated PLC and Motion – MotionPAC



WORLD HEADQUARTERS

Aerotech, Inc.: 101 Zeta Drive, Pittsburgh, PA 15238 • Ph: 412-963-7470 • Fax: 412-963-7459 • Email: sales@aerotech.com

Aerotech France: 28300 Coltainville • Ph: +33 2 37 21 87 65 • Fax: +44 (0)1256 855649 • Email: cmonnier@aerotech.com

Aerotech Germany: Gustav-Weißkopf-Str. 18 • 90768 Fürth, Germany • Ph: +49 (0)911 967 9370 • Fax: +49 (0)911 967 93720 • Email: sales@aerotechgmbh.de

Aerotech UK: The Old Brick Kiln • Ramsdell, Tadley • Hampshire RG26 5PR • Ph: +44 (0)1256 855055 • Fax: +44 (0)1256 855649 • Email: sales@aerotech.co.uk

Aerotech China: Room 101, No. 28 Building • Tianlin Road 140 • Xuhui District • Shanghai, China 200234 • Ph: +86 (21) 6126 1058 • Email: sales@aerotech.com

Aerotech Japan: WBG Marive East 22F • 2-6-1 Nakase • Mihama Ward, Chiba • Japan 261-7122 • Ph: +81 (0)50 5830 6821 • Fax: +81 (0)43 306 3773 • Email: sales@aerotechkk.co.jp

Aerotech Taiwan: 5F, No 32, Aly 18, Ln 478 • Ruiguang Road • Neihu District, Taipei City, 114 • Taiwan R.O.C. • Ph: +886 (0)2 8751 6690 • Email: sales@aerotech.tw