

Transformers

TV Series Transformers

High-quality isolation transformers

Fully compatible with Aerotech's drive systems that require separate transformers

Conservatively rated, open-frame units with mounting brackets and screw terminals or flying leads for easy installation



TV1.5



TV0.3-28-56-ST



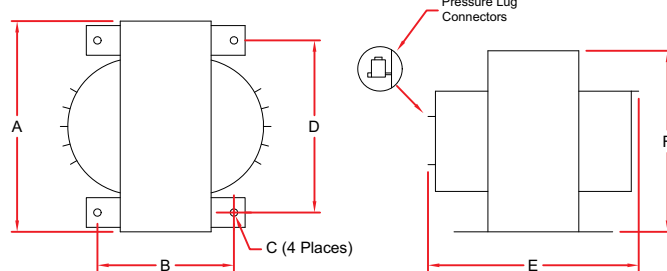
TV0.3-28

Model	Units	TV1.5	TV2.5	TV5	TV0.3-28	TV0.3-28-56-ST	TV0.3-56	TV0.5-28-56
Type		Isolation						
Rating	kVA	1.5	2.5	5	0.3	0.3	0.3	0.5
Input	VAC	104, 115, 208, 230			100, 115, 200, 230			
Terminals		Screw-type pressure lugs			Flying Leads	Screw Type	Flying Leads	
Weight	kg (lb)	17 (38)	23 (51)	35 (78)	3.6 (8)	4.7 (10.4)	3.6 (8)	4.9 (10.7)
Outputs	VAC	28, 43, 56, 70, 115			28	28, 56	56	28, 56

Dimensions - millimeters [inches]

Model	A	B	C	D	E	F
TV1.5	179 [7.1]	117 [4.6]	6.35 [0.25]	147 [5.8]	206 [8.1]	156 [6.1]
TV2.5	179 [7.1]	140 [5.5]	6.35 [0.25]	147 [5.8]	273 [10.8]	156 [6.1]
TV5	229 [9.0]	122 [4.8]	6.35 [0.25]	165 [6.5]	299 [11.8]	190 [7.5]

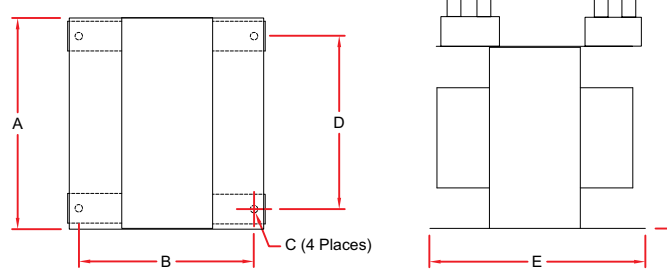
TV1.5, TV2.5, TV5



Dimensions - millimeters [inches]

Model	A	B	C	D	E	F
TV0.3-28-56-ST	117 [4.61]	90 [3.54]	5 x 10 [.2 x .39]	90 [3.54]	125 [4.92]	134 [5.28]

TV0.3-28-56-ST



Dimensions - millimeters [inches]

Model	D (Max.)	H (Max.)	L
TV0.3-28	110 [4.31]	67.3 [2.65]	762 [30]
TV0.3-56	110 [4.31]	67.3 [2.65]	762 [30]
TV0.5-28-56	143 [5.61]	74 [2.89]	305 [12]

TV0.3-28, TV0.3-56, TV0.5-28-56

